

# STEIDEL STUDIOS

## Wall Slabs

High Fired Ceramics with Specialty Glazes



*Aqua Crystalline Glaze*



## "The Color of Water"

These vibrant "Wall Slabs" are each hand crafted and fired with beautiful crystalline glazes.

A distinctive "wave" on each, gives movement and interest. Mounted on standoffs, they float off the wall 1" and can be hung out doors.

Each Slab measures 16"h x 16"w x 1"d



## "Circle - Line - Square"

Each Slab is hand formed with the distinctive "wave". After firing, metallic leaf is applied. Each measure 16"h x 16"w x 1" and come with a choice of standoff colors: Soft gold, silver, black or bronze.



Copper/Gold satin glaze with Gold Leaf applique & Gold standoffs



Deep Gray glaze with Silver Leaf applique and Silver Standoffs.



Palladium Glaze ( a shiny reflective glaze) with Gold Leaf applique and Black standoffs

## "Pearl" and "Ivory"

The soft, minimal look of this glaze gives an elegance to any wall. These can be placed outdoors as well. Each has the signature "wave".

"Pearl" is bordered with silver and silver standoffs

"Ivory" is bordered with a soft gold and champagne gold standoffs.

16"h x 16"w x 1"



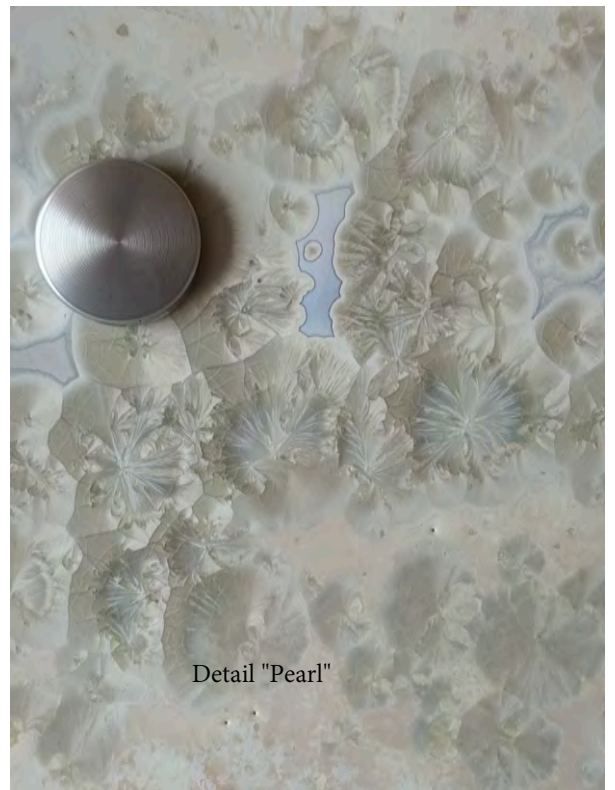
Ivory with Gold



Pearl with Silver



Detail "Ivory"



Detail "Pearl"



Copper Glaze with Gold

## CUSTOMIZATION

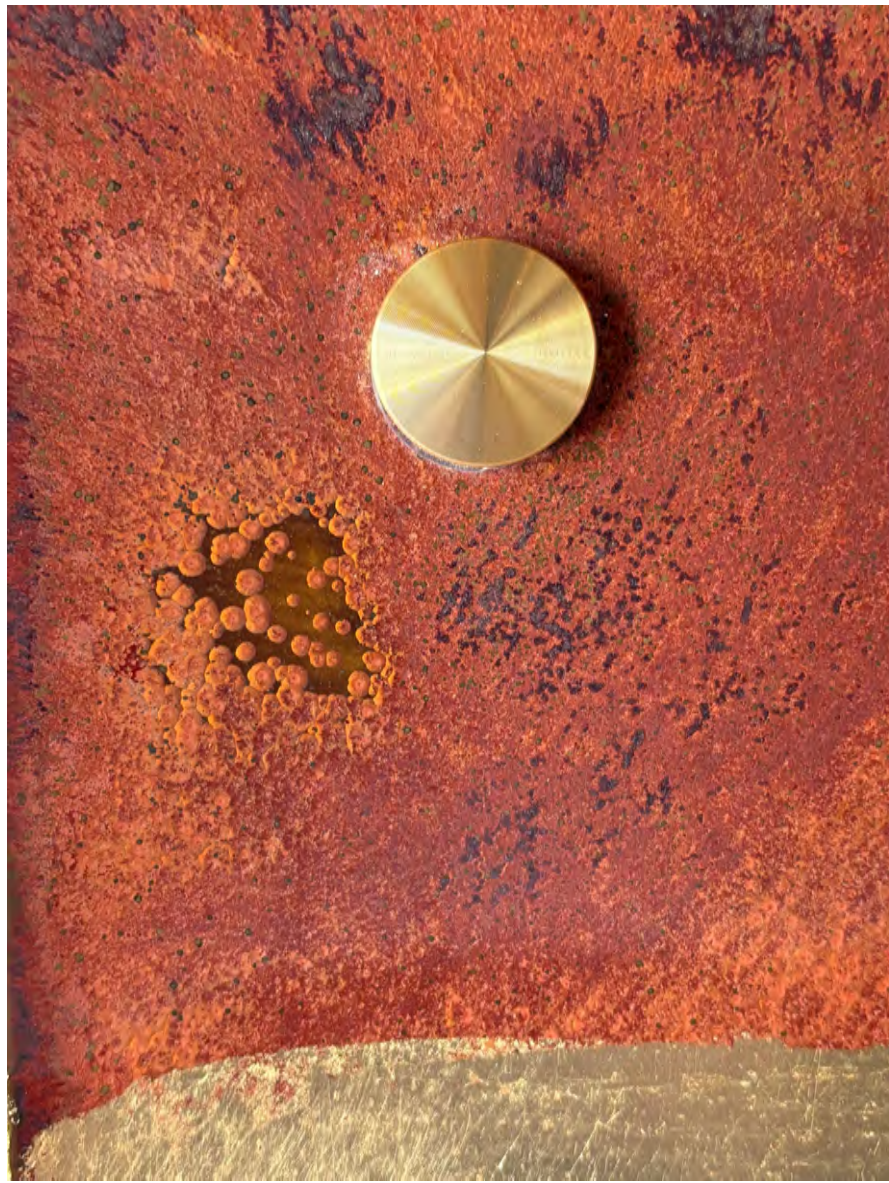
For custom wall arrangement please contact Debra for pricing, available colors, space and design ideas.

We love working with design teams to create special, unique installations for their clientele.

## CONTACT

512-571-7014  
debra@debrasteidel.com

[www.debrasteidel.com](http://www.debrasteidel.com)



"Mist" Soft Gray with Crystalline Glaze